



# Lompoc Cut or Versailles Tile



## Key Benefits

### Why Choose Lompoc Cut Tile?

- **Fully Custom Sizing:** Any dimension from 6"x6" up to 16"x24", not limited to 6" or 8" increments
- **Versailles & 3-piece patterns:** Traditional 4-piece Versailles or simplified 3-tile layout for smaller areas
- **Two thickness options:** 1" standard for concrete, 1 1/2" for sand-set installations.
- **Distinctive natural beauty:** warm creamy tan body with oatmeal & gold tones, striking gray highlights
- **Running bond & plank layouts:** great for modern linear aesthetics with alternating strip widths
- **Quarry direct supply:** consistent material sourced direct, available for wholesale & trade orders

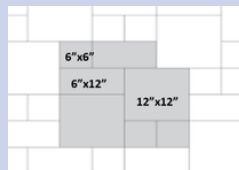
## Specifications

### Pattern & Size Guide

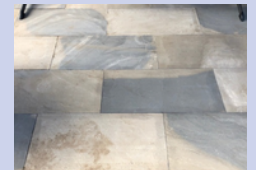
Traditional Versailles	4-piece set
Coverage per set	16 sq ft
Pieces in set	8"x8" x4 / 8"x16" x2 / 16"x16"x4 / 16" x 24" x 2
3-Piece Pattern	6"x6" / 6"x12" / 12" x12"
Concrete thickness	1"
Sand-set thickness	1 1/2"
Max size (standard)	16" x 16"
16" 24" availability	Limited qty



Traditional Versailles



3-Piece Simplified



Running bond / plank